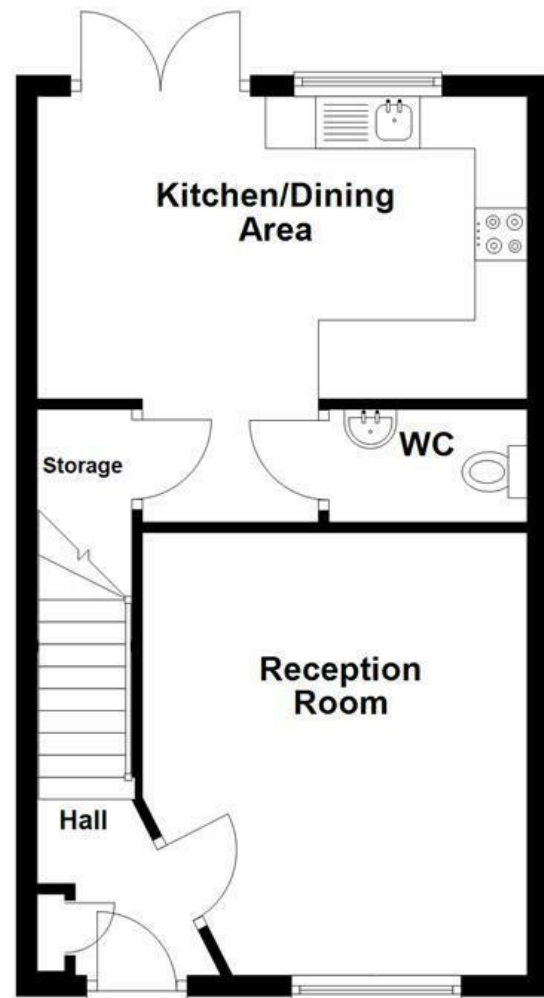
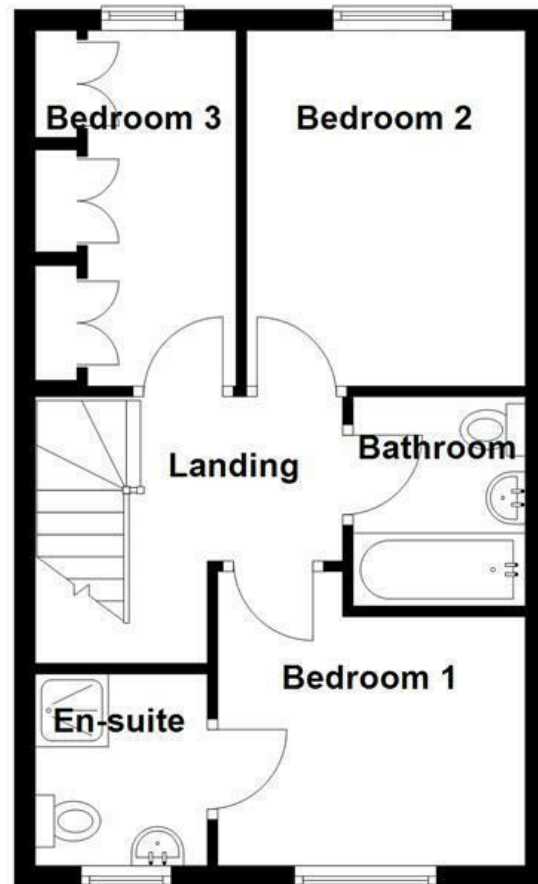



Ground Floor
Approx. 39.6 sq. metres (426.2 sq. feet)



First Floor
Approx. 37.6 sq. metres (405.0 sq. feet)



Energy Efficiency Rating		Current	Potential
Very energy efficient - lower running costs			
(92 plus) A			96
(81-91) B		84	
(69-80) C			
(55-68) D			
(39-54) E			
(21-38) F			
(1-20) G			
Not energy efficient - higher running costs			
England & Wales		EU Directive 2002/91/EC	

These particulars, whilst believed to be accurate are set out as a general outline only for guidance and do not constitute any part of an offer or contract. Intending purchasers should not rely on them as statements of representation of fact, but must satisfy themselves by inspection or otherwise as to their accuracy. No person in this firm's employment has the authority to make or give any representation or warranty in respect of the property.

Wayfaring Road, Barrow, BB7 9GE

Offers Over £289,950

A STUNNING THREE BEDROOM SEMI-DETACHED PROPERTY IN BARROW

Nestled on the charming Wayfaring Road in Barrow, this stunning three-bedroom semi-detached house is an ideal home for growing families. The property boasts a delightful garden, perfect for children to play in and for hosting summer gatherings with friends and family.

As you step inside, you will be greeted by a warm and inviting atmosphere, with spacious living areas that provide ample room for relaxation and entertainment. The well-designed layout ensures that every corner of the home is utilised effectively, making it both practical and comfortable.

The bedrooms are generously sized, offering a peaceful retreat for family members. Natural light floods through the windows, creating a bright and airy feel throughout the house.

The location on Wayfaring Road is particularly appealing, as it combines the tranquillity of suburban living with convenient access to local amenities, schools, and parks. This makes it an excellent choice for families looking to settle in a friendly community.

In summary, this property is not just a house; it is a wonderful family home that offers both comfort and a beautiful outdoor space. If you are seeking a place where your family can grow and thrive, this stunning semi-detached house in Barrow is certainly worth considering.

Wayfaring Road, Barrow, BB7 9GE

Offers Over £289,950



- Tenure Freehold
- Off Road Parking With Drive
- Two Bathrooms
- Easy Access To Major Commuter Routes
- Council Tax Band C
- Three Well Appointed Bedrooms
- Ideal Family Home With Viewing Essential
- EPC Rating B
- Contemporary Fitted Kitchen/Dining Area
- Ample Low Maintenance Rear Garden Space

Ground Floor

Reception Room

13'11 x 12'1 (4.24m x 3.68m)

UPVC double glazed window, central heating radiator, panelled elevation, television point, door to kitchen/dining area and wood effect laminate flooring.

Kitchen/Dining Area

15'5 x 13'1 (4.70m x 3.99m)

UPVC double glazed window, central heating radiator, range of gloss wall and base units, wood effect work tops, stainless steel one and a half sink and drainer with mixer tap, integrated electric double oven, four ring gas hob, integrated extractor unit, integrated fridge freezer, washer/dryer machine and slim line dishwasher, spotlights, panelled elevation, UPVC French doors to external, door to WC and wood effect laminate flooring.

WC

6'9 x 3'7 (2.06m x 1.09m)

Central heating radiator, dual flush WC, pedestal wash basin with mixer tap, spotlights, extractor fan and wood effect laminate flooring.

First Floor

Landing

10'3 x 9'8 (3.12m x 2.95m)

Loft access, smoke alarm, doors to three bedrooms and bathroom.

Bedroom One

11'1 x 9'8 (3.38m x 2.95m)

UPVC double glazed window, central heating radiator, panelled feature wall, fitted wardrobe and door to en suite.

En Suite

6' x 5'6 (1.83m x 1.68m)

UPVC double glazed frosted window, heated towel rail, dual flush WC, pedestal wash basin with mixer tap, electric feed shower enclosure with rinse head, part tiled elevation, extractor fan, spotlights and parquet effect lino flooring.

Bedroom Two

11'1 x 8'7 (3.38m x 2.62m)

UPVC double glazed window and central heating radiator.

Bedroom Three

10'9 x 6'9 (3.28m x 2.06m)

UPVC double glazed window, central heating radiator and fitted wardrobe.

Bathroom

6'6 x 5'5 (1.98m x 1.65m)

Heated towel rail, dual flush WC, pedestal wash basin with mixer tap, panel bath with mixer tap and direct feed shower with rinse head, tiled elevation, spotlights and parquet effect lino flooring.

External

Front

Tarmac drive, stone chippings, laid to lawn and paved path to front entrance door.

Rear

Enclosed laid to lawn garden, paving, stone chippings, bedding boxes with mature shrubs.

